

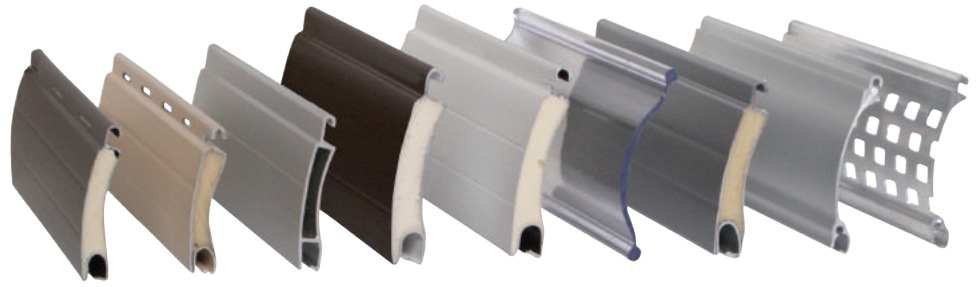
ROLLING SHUTTERS

Effortlessly creating a secure barrier to protect your work environment while you're away.



- ◆ Protect you from crimes of opportunity
- ◆ One time application means guaranteed payback
- ◆ Unobstructed view when they are open unlike window bars
- ◆ Pentagon shutters effectively secure high value liquor, tobacco and pharmaceutical products

SUPERIOR SUPPORT • PREMIUM QUALITY • CUSTOMIZED SOLUTIONS



400 Series **440 Series** **450 Series** **500 Series** **520 Series** **530 Series** **540 Series** **560 Series** **561 Series**

SLAT DESIGNS

TYPE OF SLAT									
Height of Slat	40 mm	37 mm	40 mm	53 mm	53 mm	66 mm	53 mm	56 mm	56 mm
Roll Formed Aluminum - Regular Density Foam	◆			◆					
Roll Formed Aluminum - High Density Foam					◆				
Roll Formed Aluminum - Ultra Hard Resin		◆					◆		
Extruded Aluminum			◆					◆	◆
Clear Lexan						◆			
Perforated									◆

AVAILABLE COLORS									
Arctic White	◆	◆	◆	◆	◆	◆		◆	◆
Ivory Tusk	◆			◆		◆			
Sand Beige	◆	◆	◆	◆					
Aluminum Grey	◆	◆		◆	◆	◆	◆		
Medium Brown	◆	◆							
Dark Bronze	◆		◆	◆	OPTIONAL	◆		◆	◆
Clear Anodized			◆					◆	◆
Black	◆							◆	

MAX RECOMMENDED SIZES									
Maximum Width	126"	192"	192"	168"	204"	120"	228"	192"	228"
Maximum Height	144"	144"	144"	144"	144"	98"	144"	180"	180"
Maximum Area	80ft ²	140ft ²	140ft ²	110ft ²	160ft ²	50ft ²	200ft ²	200ft ²	200ft ²

MAX HEIGHT PER BOX SIZE									
5-3/8" (137 mm)	38"	30"	30"						
6-1/2" (165 mm)	75"	54"	47"						
8" (205 mm)	120"	94"	90"	58"	58"	75"	58"	105"	105"
10" (250 mm)	144"	144"	144"	105"	105"	120"	100"	144"	144"
12" (300 mm)	144"	144"	144"	144"	144"	120"	144"	180"	180"

OPERATIONS AVAILABLE
 Tape Colier • Tape Winch • Manual Push-Up • Crank • Electric Motor • Electric Motor with Manual Override • Electric Motor with Remote Control

Please note: Size chart is for reference only. For situations where dimensions are critical, please confirm with Pentagon.

COLORS



Arctic White Ivory Tusk Sand Beige Aluminum Grey Medium Brown Dark * Bronze Clear Anodized Black*

Please note: Not all colors are available for all slat series. Please contact us to confirm available options.

*Additional cost for Black and Dark Bronze

Distributed By:



Phone: 1.866.705.4668

Fax: 1.866.400.1540

Email: sales@pentagonshutters.com

Web: www.pentagonshutters.com