



Engineered for Safety

Pentalift LDL Dock Lift

The Pentalift LDL dock lift is offered in the most common sizes for dock lifts. It is ideally suited for retail stores or any location that loads or unloads a variety of trucks or trailers. It is highly effective for increasing loading dock safety and efficiency.

Pentalift LDL Dock Lift Design Features

Plated access chain: Prevents operator from falling

High tensile steel checker plate hinged bridge and platform with structural supports

OSHA compliant 42" high removable steel, guard rail c/w mid rail and 4" kick plate



ANSI MH 29.1 compliant beveled toe guards

Exclusive PentaFLOW hydraulic bypass cylinder (see description on back) with hydraulic velocity fuse

Scissor legs: Solid steel one piece construction with precision reamed holes. All pivot pins are chrome plated.

“Lubricated for Life” maintenance free bearings at all pivot points

Hinged integral maintenance stand

Shipped complete: Finished product, power units, controls and all other components are factory load-tested and shipped fully assembled, complete with oil.

Exclusive Pentlift

PentaFLOW

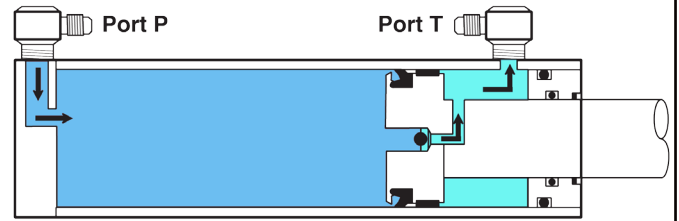
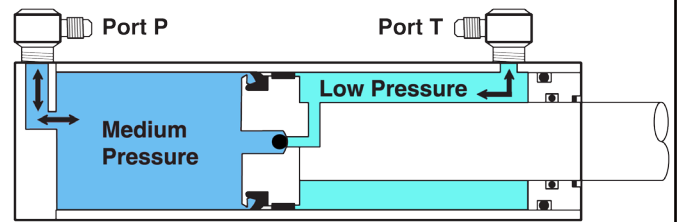
Hydraulic Cylinder

The lift cylinder is the heart on any hydraulic lift system, Pentlift's exclusive design ensures the longest cylinder life, reduces maintenance and eliminates oil spills.

Here's How it works:

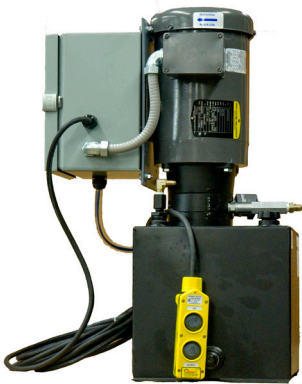
Pentlift's PentaFLOW cylinder is completely sealed from the surrounding atmosphere and all components are continuously bathed in fresh oil. Contamination and deterioration of the cylinder cannot occur. When the cylinder reaches full extension, the bypass valve opens and allows oil to flow through the piston to the rod side of the cylinder, out the port, and back to the reservoir. This prevents the cylinder from dead ending and building high stresses in the cylinder, equipment structure and hydraulic system. Air in the cylinder is automatically removed through the bypass valve eliminating the need for manual bleeding which often results in oil spills and contamination.

Note: Precision turned, ground, polished and chrome plated cylinder rod and "drawn over mandrel" precision honed barrels are standard on all PentaFLOW cylinders.



■ Oil under medium pressure Port P (oil from Pump)

■ Oil under low pressure Port T (oil to Reservoir)



Electro-Hydraulic Power Unit

- Remote mounted power unit with integral oil reservoir
- Totally enclosed motor incorporates NEMA 12 pre-wired control enclosure
- Motor starter with overload protection are standard
- The power unit is completely assembled, filled with oil and factory tested prior to shipment
- Hydraulic fluid is mineral based oil
- Comes with up / down control pendant

Pentlift LDL Dock Lift Models: The following models and sizes are available

Model Number	Platform Size (W X L)	Vertical Travel	Capacity (lb)	Low Height (in)
LDL68_	72 in x 96 in	59 in	5000 or 6000	8"
LDL69_	72 in x 108 in	59 in	5000 or 6000	8"
LDL610_	72 in x 120 in	59 in	5000 or 6000	8"
LDL78_	84 in x 96 in	59 in	5000 or 6000	8"
LDL79_	84 in x 108 in	59 in	5000 or 6000	8"
LDL710_	84 in x 120 in	59 in	5000 or 6000	8"
LDL88_	96 in x 96 in	59 in	5000 or 6000	8"
LDL89_	96 in x 108 in	59 in	5000 or 6000	8"
LDL810_	96 in x 120 in	59 in	5000 or 6000	8"

Pentlift LDL Dock Lift Options

- Toe sensor
- Bridge lengths up to 42 inches
- Aluminum bridge
- Split bridge
- Night Stops
- Power units up to 10 horsepower
- Wall bracket for power unit
- Deck mounted push button
- Quick disconnect control pendant
- Coil Cord for Control Pendant

Consult a Pentlift sales representative for additional information or equipment recommendations

Note: Some photos may reflect products with optional features. All Pentlift Equipment products are subject to design improvement through modification without notice.

PENTALIFT EQUIPMENT CORPORATION

P O Box 1510 Buffalo NY U.S.A. 14240-1510

P O Box 1060 Guelph ON Canada N1H 6N1

Website: www.pentlift.com

Phone (519) 763-3625 Fax (519) 763-2894

Phone (519) 763-3625 Fax (519) 763-2894

Email: dock@pentlift.com

Product Bulletin 0214D028

Printed in Canada