

# POWERHOUSE<sup>®</sup>

HIGH PERFORMANCE RUBBER DOOR

## The World's First Release & Restore High-Speed Rubber Door

With heavy-duty construction, high-quality materials and patent-pending innovations, the Powerhouse Rubber Door takes resiliency to a completely new level. This heavy-duty rubber door cannot only survive extremely harsh and windy conditions, it is engineered to last a lifetime.

Compared to conventional doors, the virtually indestructible door offers the lowest total cost of ownership. As the world's first self-resetting high-speed rubber door, after accidental impact, it cleanly releases and instantly restores with the push of a button. Unlike any rubber door ever built, the Powerhouse delivers the power, performance and dependability to meet the demands of the world's most extreme environments.

**Trouble-Free Maintenance** - Simple preventative maintenance keeps it moving, day in, day out, cycle after cycle.

**Industrial Strength** - Stronger, tougher and sturdier than conventional rubber doors, the reinforced side frames and 1/4" thick SBR rubber panel provides greater stability and performance.

**Fast** - The powerful direct-drive, variable-speed motor provides soft starting and stopping and reduces wear and tear.

**Responsive to High Wind Loads** - Responds dynamically to high pressure and wind loads by increasing resistance.

**Releases & Restores** - Rytec's exclusive Release & Restore™ system allows the rubber panel to release without damage and self-reset in just seconds, with the push of a button.

**Full-Perimeter Seals** - The patent-pending Ry-Tension™ side columns create a tight seal along the full height of the door. The bottom loop seal compresses to form a tight seal along the full width of the door.

**Total Digital Control** - The highly advanced System 4<sup>®</sup> door controller enables precise door positioning, infinite speed adjustments and total control of all door functions.

**Advanced Safety** - Safety features include Pathwatch™ warning lights, dual thru-beam photo eyes and a wireless reversing edge - all standard equipment.



*Shown with optional hood*



# POWERHOUSE®

## HIGH PERFORMANCE RUBBER DOOR

### Model Name

- Rytec® Powerhouse™ SD Door

### Size and Dimensions

- Up to 24' W or 35' H

### Safety

- Dual thru-beam photo eyes
- Ry-Wi™ Electric Reversing Edge
- Pathwatch™ Safety System

### Available Options

- Activators
- Hoods
- Light Curtains
- Windows
- Colors

### Warranty

- Lifetime limited warranty on SBR panel material.
- One-year warranty on optional EPDM panel material.
- One-year limited warranty on materials and workmanship.



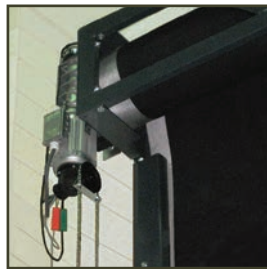
1/4" thick SBR rubber

### Reinforced & Resilient Rubber Panel

- 1/4" thick SBR panel that is puncture and rip resistant panel with a tensile strength of 2550 psi.
- Segmented wind locks allow the panel to release cleanly when impacted from either direction.

### Virtually Maintenance-Free for Low Cost of Ownership

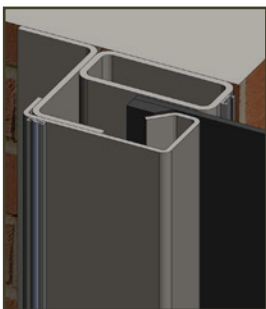
- No conventional wear parts - no mechanical limit switches, springs, sprockets, counterbalance, cables or belts to maintain.
- No shear bolts, knock-away parts or field repairs after most impacts.



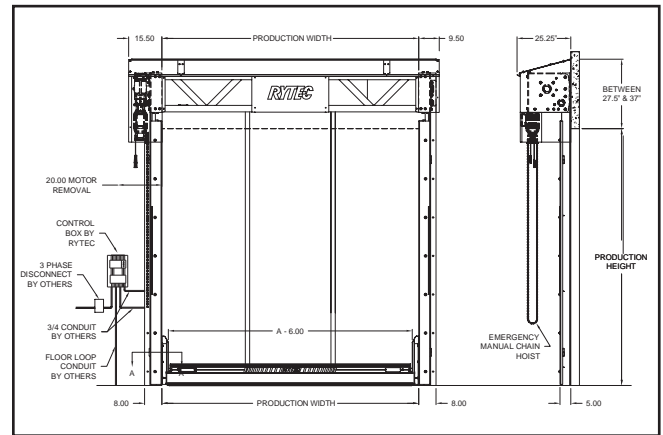
High Efficiency Direct-Drive Motor

### Extreme Durability for Extreme Application

- Impact-resistant, self-supporting side columns made of structural steel are welded to a "Z" mounting bracket with bullet-hinged guide.
- Aluminum bottom beam provides corrosion-resistance for harsh environments.



Powerhouse side column profile



### Patent-Pending Innovations for Advanced Performance

- Stay-Fast™ Windstops for greater wind resistance.
- Ry-Tension™ system with dynamic "knuckle grip" provides 30% stronger hold on panel.



Stay-Fast™ Windstops



### Door Operator

- Heavy-duty variable-speed direct-drive electric operator.
- Soft starting & soft stopping.
- Integrated brake/catching device.
- NEMA 4/12 CUL rated.
- Includes chain hoist for manual operation.

### Electrical Controls

- System 4® controller housed in a NEMA 4X rated enclosure with factory set parameters.
- Intelligent processor monitors and controls power consumption.
- Advanced self-diagnostics for troubleshooting.



System 4 shown with optional rotary disconnect



888-GO-RYTEC RytecDoors.com  
Tel 262-677-9046 Fax 262-677-2058  
One Cedar Parkway Jackson, WI 53037-0403